



KONICA MINOLTA

Zoom to the 40th Power

DIMAGE Z1



Speed in Hand... Excitement Ahead



- Mega Zoom (10x optical & 4x digital)
- Rapid AF for sharp focus immediately
- High-quality VGA movie recording
- Easy operation & stress-free response
- Superior image quality from Minolta image processing technology
- Compatible with Minolta's external flashes

www.minolta.com

The essentials of imaging

100% Amazing

One look tells you it's a camera like no other. Introducing the DiMAGE Z1, the futuristic wonder that's ideal for active lifestyles. Compact, but with 10x optical zoom. Full-featured, yet easy to use. And best of all, it won't let that special moment get away. Minolta's innovative features, including Rapid AF, give you the speed you need where other digital cameras leave you waiting. So put the future in your hands today... and make the moment last forever.

DiMAGE Z1

Fill the frame with Mega Zoom



Don't worry if you can't get near your subject—Mega Zoom will pull it closer, letting you compose the shot however you like. The DiMAGE Z1 comes with a powerful 10x zoom lens inside its compact and lightweight body, and extends your range even further with 4x seamless digital zoom. Zooming is quick and smooth.

Optical zoom range is 38 to 380mm (35mm film camera equivalent).



10x optical zoom



4x digital zoom

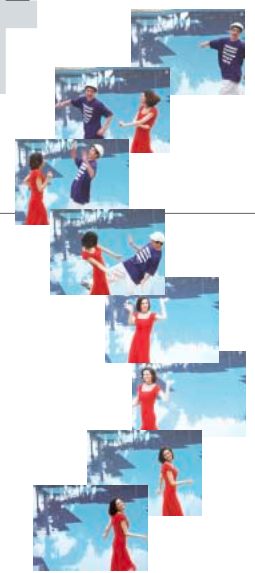
Mega Zoom



Rapid AF captures the moment

In countless situations, autofocus performance makes all the difference between a wonderful shot and a missed opportunity. Enter Minolta's Rapid AF. This unrivaled new technology finds your subject with exceptional speed, even at 10x zoom. You'll be able to capture beautiful images with the comfort of a 35mm film camera.

Rapid AF



High-quality VGA movies

In terms of quality, the DiMAGE Z1 is more like a camcorder than a regular digital camera. Its VGA recording offers four times the resolution and twice the frame rate of conventional QVGA recording, for clips that look stunning when viewed on TV. As you record a movie, Minolta's advanced autofocus technology keeps your subject in focus for satisfying results.

In addition, the DiMAGE Z1 offers high picture quality in dim conditions (Night Movie), and allows you to save any frame in a movie as a still shot. ArcSoft VideoImpression™ 2 is bundled for movie editing. (Windows only).

Max. recording resolution: VGA (640 x 480, 30 fps). Other settings: 320 x 240 or 160 x 120, 15 fps or 30 fps. At non-VGA resolutions, recording can continue until the memory card is full. (On rare occasions, a memory card may not record to full capacity due to its writing speed.)

Movie



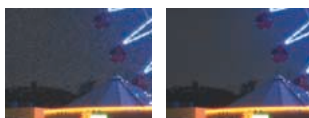
Quality That's Breathtaking...



3.2 Megapixels



Slow shutter noise reduction



OFF

ON

Gorgeous 3.2 megapixel images

The DiMAGE Z1 provides more than enough detail to make impressive prints—as large as 17 cm x 13 cm (7 inches x 5 inches) at photo-quality 300dpi resolution, and up to 35 cm x 26 cm (14 inches x 10 inches) at 150dpi. High color fidelity is obtained through the camera's primary color filter.

Minolta CxProcess II for vivid colors

Minolta CxProcess II, an exclusive image processing technology found in Minolta's more sophisticated digital cameras, is included to produce images with vivid colors and minimal noise.

Superb clarity in low-light situations

For clear still pictures of scenes such as the evening sky or fireworks, you can turn on the advanced noise reduction circuitry of the DiMAGE Z1 during slow shutter shooting. Movie clips recorded in low light look clearer as well, thanks to a CCD that's almost four times more sensitive than conventional sensors.



The Precision to Capture the Moment...



You're never kept waiting

Immediate autofocus The DiMAGE Z1 boasts the fastest autofocus in its class—at 10x zoom,* Rapid AF has your subject in focus in approx. 0.4 seconds, and is even faster at wider angles. The key to this performance is the hybrid design of Rapid AF, which employs video AF for accuracy and a passive sensor specifically to boost speed. Accuracy is further enhanced by a wide 3-point focusing area.



* Fastest among digital cameras with a built-in lens system with 10x or more optical zoom, as of July 1, 2003.

Speedy operation: Turn on the power, and you can take your first shot in approx. 2 seconds. Shutter release time lag is extraordinary—only 0.06 seconds. And shot intervals are 1.2 seconds.†

†Autofocusing time is not included.

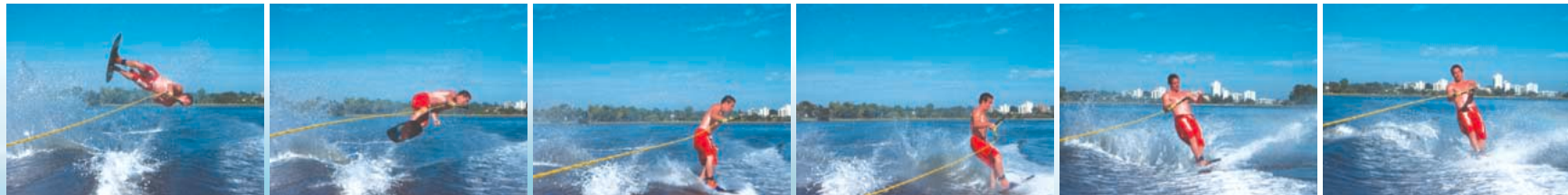
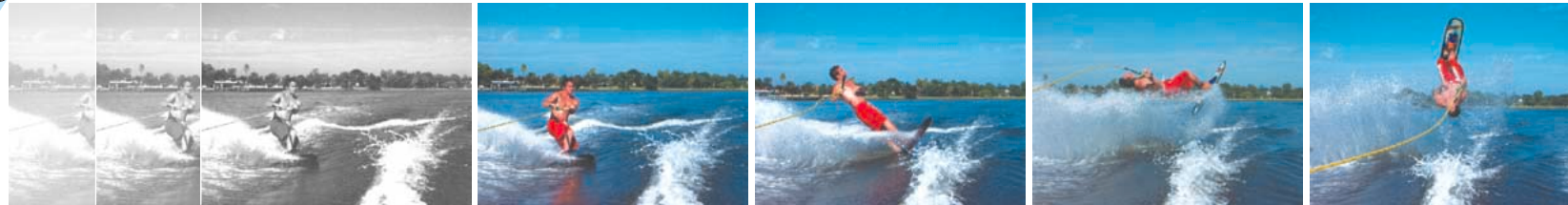
Fast & flexible continuous shooting

UHS continuous shooting: Capture an entire sequence of 1.3 megapixel images at a blazing 10 frames per second. Ideal for moving subjects.

Progressive Capture: Be ready when something great happens. This unique feature lets you keep on shooting endlessly until you've captured the shot you want.

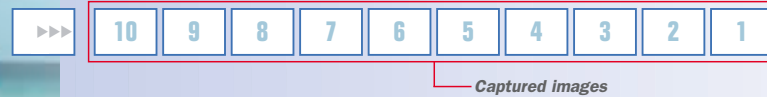


Full press...Keep it down



Let It Go!

How Progressive Capture Works



In this mode, continuous shooting goes on for as long as you have the shutter button pressed. But it's only when you remove your finger that the DiMAGE Z1 starts saving images. The last several images in your sequence get saved: as many as 6 images in normal mode or 10 images in UHS mode.



Operation So Comfortable...

Ergonomic design

A deep grip makes the DiMAGE Z1 a pleasure to hold. Plus, all controls are clearly marked and positioned for easy operation.

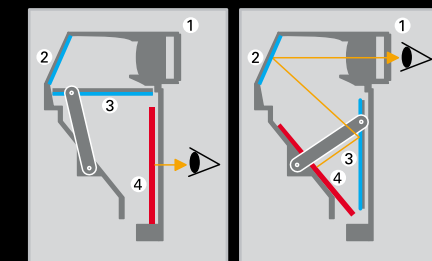


The innovative Switch Finder & extra-clear live view

A unique viewing system, called Switch Finder, makes sure you see precisely the same live image in the viewfinder or on the LCD monitor. And this live image is exceptionally clear and smooth because of the CCD's fast frame rate—at 60 fps, it's twice that of a conventional sensor. There's no difference in color or position (parallax error) between the monitor and viewfinder image. You'll be able to frame your shots with ease.



Switch Finder shows you the same image at all times.



1. Viewfinder 2. Fixed mirror 3. Movable mirror 4. LCD monitor (Real Motion Monitor)



User-friendly controls

The mode dial by your thumb lets you easily switch between exposure modes and movie recording. And the flash button next to it can be customized to enable quick switching of various settings.



Anywhere, Anytime!



With DiMAGE Z1 built-in flash



With Maxxum Flash 3600HS(D)

Ideal for low-light situations

Powerful built-in flash: You can reach subjects as far as 4.3 meters (14.1 feet) with the DiMAGE Z1 at its widest angle. A variety of flash modes are provided.

Outstanding flash expandability: For important indoor events, attach an external Minolta flash to the hot shoe. You won't find many compact digital cameras with an option like this.

Better view in the dark: Frame your shots with greater ease than ever. The LCD monitor image brightens automatically, so you can get a clear view of your subject in color.



Minolta flashes



Maxxum Flash 2500(D)



Maxxum Flash 3600HS(D)



Maxxum Flash 5600HS(D)



Conventional model

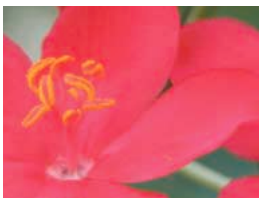


DiMAGE Z1

Macro



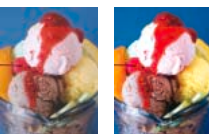
Super Macro



Portrait



Color modes



Natural Color Vivid Color



Sepia Color Black & White

Flexible control in diverse situations

PASM exposure modes: For maximum ease, let Program mode take care of everything. Or, for more control, switch to Aperture-priority, Shutter-priority, or Manual.

Automatic Digital Subject Program Selection: The DiMAGE Z1 can detect the type of scene you're shooting and automatically optimize exposure, shutter speed, white balance, and other settings for you.

Fantastic close-up shots: With Super Macro, you can put the front of the lens as close as 4 cm (1.6 inches) from your subject.

Selectable color modes: Choose from among four different color modes to achieve a particular effect you have in mind.

For Additional Creative Control

Wide-angle converter lens (optional)

Get more of the scene into your shot with the optional 0.75x wide-angle converter lens. Its 28mm* wide angle is great for capturing indoor and outdoor architectural shots, as well as panoramic landscapes. * 35mm film camera equivalent



Wide Converter ZCW-100 kit



With ZCW-100 kit: 28mm



No converter: 38mm

Flexible metering

Three metering options ensure optimum results under varying light conditions. Choose from multi-segment, center-weighted, or spot metering.

Adjustable white balance

In different types of lighting, you can achieve the right coloration by selecting the white balance that works best: Auto, Daylight, Tungsten, Fluorescent, Cloudy, Flash, and Custom.

Manual focus

When you want more creative control over how your shot is focused, just switch from autofocus to manual focus control.

Histogram display

The histogram of a captured image shows you right away how luminance is distributed in the image, so you can change settings if necessary to capture the shot you want.

SPECIFICATIONS

Number of effective pixels	Approx. 3.2 million
CCD	1/2.7-type interline primary-color CCD with a total of approx. 3.3 million pixels
Camera sensitivity	Auto and 50 / 100 / 200 / 400 ISO equivalent
Lens	5.8 – 58.0 mm (35 mm equivalent: 38 – 380 mm), f/2.8 – f/3.5; 10 elements in 7 groups
Recording media	SD (Secure Digital) Memory Card / MultiMediaCard
File format	JPEG, Motion JPEG (MOV) with Audio, DCF1.0, DPOF (Ver.1.1), Exif 2.2
No. of recorded pixels	2048 x 1536, 1600 x 1200, 1280 x 960, 640 x 480
Image file size	Economy: 430 KB, Standard: 720 KB, Fine: 1.1 MB, Movie (320 x 240, at 15 fps): 340 KB/s
Storage capacity	Economy: 32, Standard: 17, Fine: 9
Storage capacity	Movie recording (15 fps): (320 x 240) 41 seconds
Autofocus system	A combination of a passive AF sensor and a video AF system
Autofocus area	3-point wide focus area: Wide focus area / Local focus area with Focus Area Selection
Focus modes	Autofocus: One-shot AF, Full-time AF, Manual focus. Focus lock available in One-Shot AF
Focusing range	Wide / Tele: 0.5 m (1.6 feet) / 2.0 m (6.6 feet) to infinity
	Macro: Wide: 0.1 m (0.3 feet) – 1.0 m (3.3 feet) / Tele: 1.2 m (3.9 feet) – 2.5 m (8.2 feet)
	Super Macro: 4 cm (1.6 inch) – 100 cm (39.4 inch)
White-balance control	Automatic, Preset (Daylight, Tungsten, Fluorescent, Cloudy, Flash), Custom
Metering	Multi-segment (256 segments), Spot, Center-weighted
Shutter speed	A mode / P mode: 4 – 1/1000 seconds, M mode / S mode: 15 – 1/1000 seconds, Time exposure (max. 30 seconds): Auto, Digital Program Selector mode: 2 – 1/1000 seconds
Exposure mode	Programmed AE, Aperture priority, Shutter priority, Manual. AE lock available
Digital Subject Program Selection	Portrait, Sports action, Landscape, Sunset, Night portrait / Night view, Standard ± 2 Ev with 1/3 Ev step
Exposure control	1.0 / 0.5 / 0.3 Ev increments; No. of bracket: 3 frames
Exposure bracketing	Autoflash & Autoflash with red-eye reduction, Fill-flash, Slow shutter sync. (in Auto/P/DSPS mode).
Flash mode	Fill-flash, Fill-flash with red-eye reduction, Slow shutter sync. (in A/S/M mode). Flash cancel possible by pushing the built-in flash unit downward (ISO 100 equivalent) 12.0 (m) / 39 (feet)
Flash GN	Maxxum Flash 5600HS(D) / 3600HS(D) / 2500(D)
External flash units connectable	Viewfinder
Finder	-3 – +1m ⁻¹
Diopter	1.5 inch (3.8 cm) low-temperature, polysilicon TFT color, with total 113,000 (approx.) pixels
LCD monitor	Approx. 10 seconds delay
Self-timer	Vivid, Natural, Monochrome, Sepia
Color mode	

Easy movie editing with VideImpression

Put together different movie clips you've shot with the DiIMAGE Z1, and also add text, audio, still images or special effects. The bundled ArcSoft VideImpression™ 2 software guides you step by step through the editing process, and lets you record the finished piece on a Video CD for playback on your DVD player.



DiIMAGE Viewer

The DiIMAGE Viewer offers a user-friendly way to transfer pictures into your computer, and to manage and edit these images. Various adjustment tools are provided, including flicker reduction for your movie clips. Color management ensures accurate display and quality printouts.

Sharpness / Contrast control	Adjustable in 3 levels
Noise reduction	User selectable
Printing output control	Exif Print, PRINT Image Matching II, USB DIRECT-PRINT
PC interface	USB ver. 1.1 (USB ver. 2.0 available), Video output NTSC / PAL (selected on the camera)
Battery	Four AA Ni-MH batteries, AA Alkaline batteries, External High Power Battery Pack Kit (EBP-100)
Battery performance*	Continuous playback time: 300 minutes with Alkaline battery
External power source	6V DC (with specified AC adapter)
Dimensions (WxHxD)	Approx. 109.5 x 77.5 x 80.0 mm / 4-5/16 x 3-1/16 x 3-1/8 inch
Weight	Approx. 305 g / 10.8 ounces (without batteries and recording media)

Standard Accessories

Battery (four AA Alkaline batteries), Neck Strap (NS-DG5000), AV Cable (AVC-200), USB Cable (USB-500), DiIMAGE Software CD-ROM, SD Memory Card (16 MB), Lens Cap (LF-242), Shoe Cap (SC-1000), ArcSoft VideImpression CD-ROM

Optional Accessories

Camera Case (CS-DG600), Wide Converter ZCW-100 kit, External High Power Battery Pack Kit (EBP-100), Leather Neck Strap (NS-DG1000), AC Adapter (AC-1L), Flashes; Maxxum Flash 5600HS(D) / 3600HS(D) / 2500(D)

* Availability of accessories depends on areas.

Specifications and accessories are based on the information available at the time of printing, and are subject to change without notice. For the latest information, please visit: www.dimage.minolta.com

Compatible Computers

- IBM PC / AT compatible computers with preinstalled Windows Me, Windows 2000 Professional, Windows XP (Home / Professional), Windows 98*, or Windows 98 Second Edition* and with a built-in USB port as standard interface.
- Apple Macintosh computers with Mac OS 9.0–9.2.2, Mac OS X v.10.1.3–10.1.5, v.10.2.1–10.2.6, and with a built-in USB port as standard interface.

* Users of Windows 98 and Windows 98 SE must install dedicated driver software supplied with the product.

For more compatibility information, please visit: www.minoltausa.com

Notes:

- Computers and operating systems must be guaranteed by their manufacturers to support USB interface. For details, please contact the manufacturer.
- Problems may be encountered depending on what other USB devices are being used in parallel with this product.
- Only a built-in USB port is supported. Problems may be encountered when the camera is connected to a USB hub.
- Normal operation may not occur even if all the system requirements are met.

Minolta, The essentials of imaging, DiIMAGE, CxProcess and Maxxum are trademarks or registered trademarks of Minolta Co., Ltd. ■ Windows is a trademark or a registered trademark of Microsoft Corp. Macintosh is a trademark or a registered trademark of Apple Computer Inc. ■ All other brand and product names are trademarks or registered trademarks of their respective owners.

Images (except for product photos) are simulated for design purposes.

Minolta Co., Ltd. 3-13, 2-Chome, Azuchi-Machi, Chuo-ku, Osaka 541-8556, Japan

Minolta Corporation 101 Williams Drive, Ramsey, New Jersey 07446, U.S.A.

Minolta Canada Inc. 369 Britannia Road East, Mississauga, Ontario, L4Z 2H5, Canada

This brochure is printed with soy ink for environmental preservation.